

## Check Your Understanding

- Vocabulary** A mathematical phrase that contains numbers and operation symbols is a(n) expression.
- Error Analysis** A student says that the value of the expression  $5 + 25 \div 5$  is 6. What error did the student make?

Which operation should you do first?

- $6 - 2 \times 2$
- $33 - (4 + 6)$
- $6 \times (2 - 5)$
- $7 + 4 \times 3$

Use  $<$ ,  $=$ , or  $>$  to complete each statement.

- $(1 + 2) \times 2$   $\square$   $1 + 2 \times 2$
- $3 \times (4 - 2)$   $\square$   $3 \times 4 - 2$

## Homework Exercises

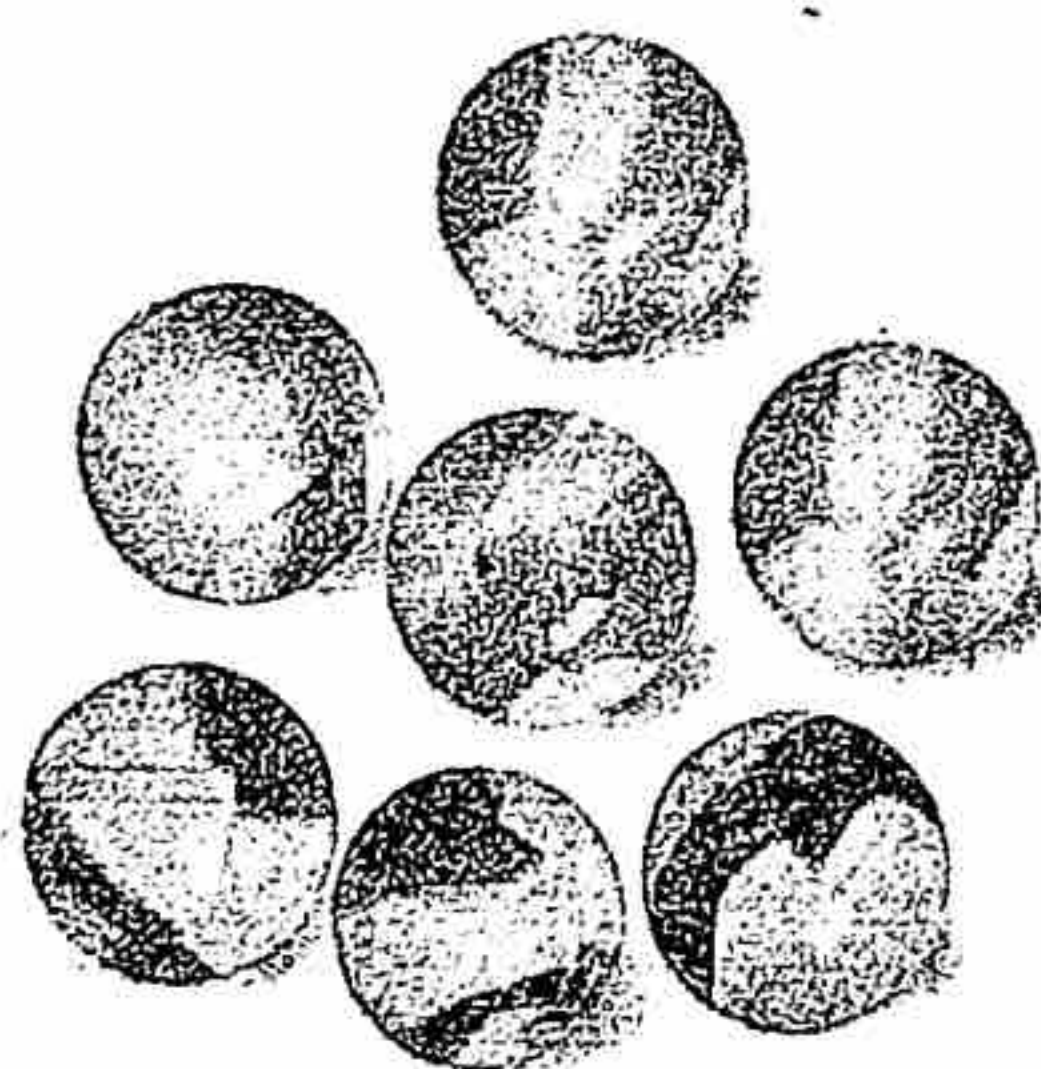
For more exercises, see Extra Skills and Word Problems.

### GO for Help

For Exercises	See Example
9–17	1
18–26	2

Find the value of each expression.

- $450 \div 45 + 5$
- $29 - 4 \times 7$
- $16 + 36 \div 12$
- $14 - (7 + 5) \div 2$
- $(13 + 21) \times 2$
- $400 \div (44 - 24)$
- $16 - (2 + 4) \times 2$
- $26 + 5 - 4 \times 3$
- $13 + 5 \times 12 - 4$
- $4 \times \$40 - \$5$
- $\$50 + \$20 \div 2$
- $\$100 - 2 \times \$30$
- $\$35 \times 2 + \$42 \div 2$
- $3(\$28 + \$32) - \$10$
- $\$15 \times 10 + \$30 \times 2$
- $(\$45 \times 4 + \$125 \times 3) \div 5$
- $(\$75 \times 5) + (\$25 \times 6) - \$$



- Marbles** You buy 2 red rainbow marbles for 50¢ each, 3 bumblebee marbles for 90¢ each, and 2 tricolor marbles for 65¢ each. Find the total cost of the marbles.

### GPS

- Guided Problem Solving** A group of 25 students and 3 adults goes to an art museum. Admission costs \$6 per student and \$10 per adult. There is a \$15 discount for groups of 20 or more. Find the total cost for the trip.

- Make a Plan** Write an expression for the cost of both the students and the adults. Next, find the total cost of the trip.
- Carry Out the Plan** An expression for the total cost for students and adults is  $25 \times \$6 + 3 \times \$10 - \$15$ .